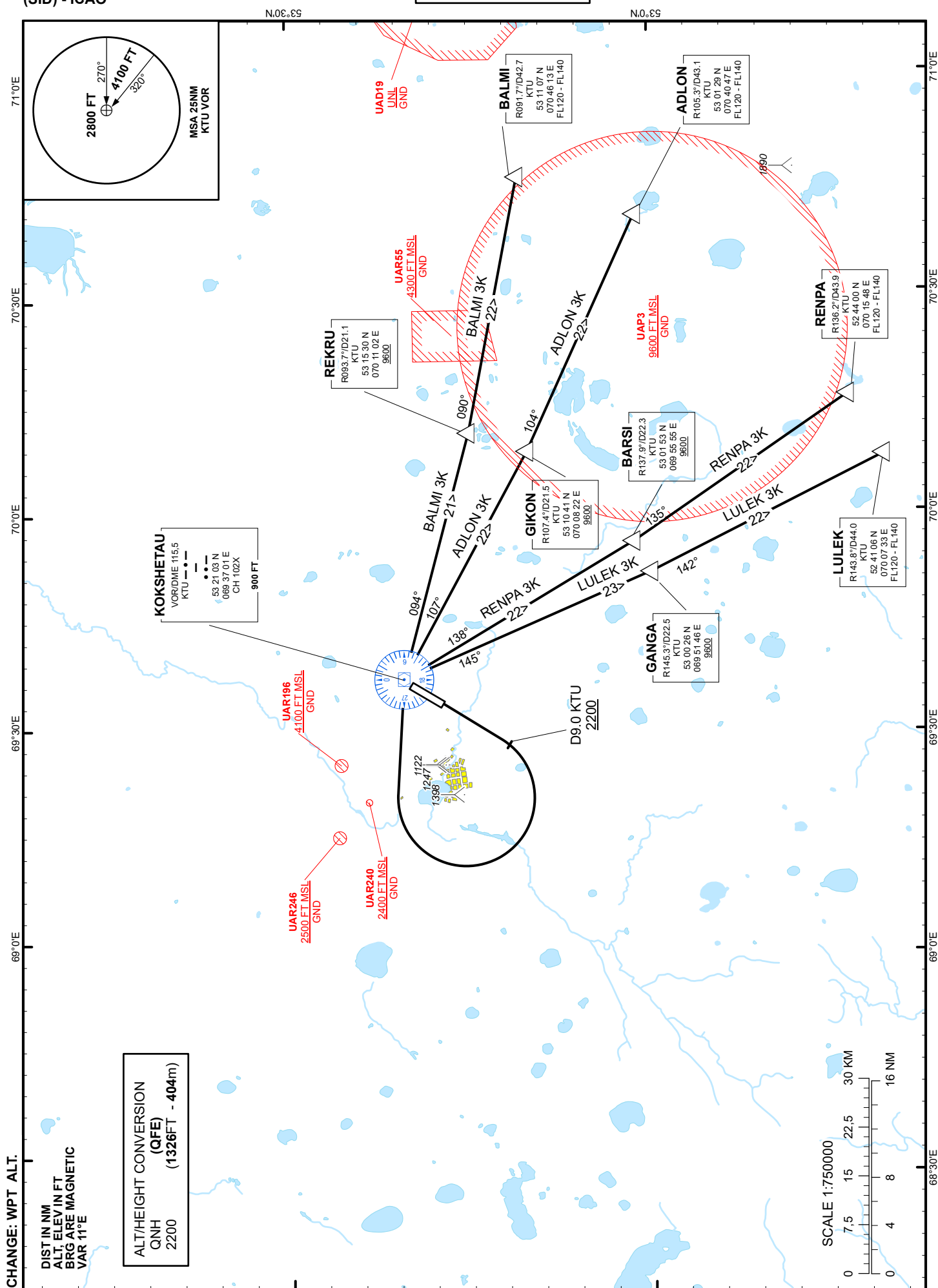


**KOKSHETAU  
RWY 20**



**STANDARD INSTRUMENT DEPARTURE ROUTES (SID) KOKSHETAU RWY 20**

**BALMI 3K**

After take-off climb straight ahead to 2200 or above. At D9.0 KTU, turn RIGHT to KTU, after crossing KTU proceed on track 094° to REKRU (R093.7° D21.1 KTU). After crossing REKRU turn LEFT on track 090° to BALMI (R091.7° D42.7 KTU).

Cross REKRU at 9600FT or above.

Cross BALMI at FL120-FL140.

**ADLON 3K**

After take-off climb straight ahead to 2200 or above. At D9.0 KTU, turn RIGHT to KTU, after crossing KTU proceed on track 107° to GIKON (R107.4° D21.5 KTU). After crossing GIKON turn LEFT on track 104° to ADLON (R105.3° D43.1 KTU).

Cross GIKON at 9600FT or above.

Cross ADLON at FL120-FL140.

**RENPA 3K**

After take-off climb straight ahead to 2200 or above. At D9.0 KTU, turn RIGHT to KTU, after crossing KTU proceed on track 138° to BARSİ (R137.9° D22.3 KTU). After crossing BARSİ turn LEFT on track 135° to RENPA (R136.2° D43.9 KTU).

Cross BARSİ at 9600FT or above.

Cross RENPA at FL120-FL140.

**LULEK 3K**

After take-off climb straight ahead to 2200 or above. At D9.0 KTU, turn RIGHT to KTU, after crossing KTU proceed on track 145° to GANGA (R145.3° D22.5 KTU). After crossing GANGA turn LEFT on track 142° to LULEK (R143.8° D44.0 KTU).

Cross GANGA at 9600FT or above.

Cross LULEK at FL120-FL140.